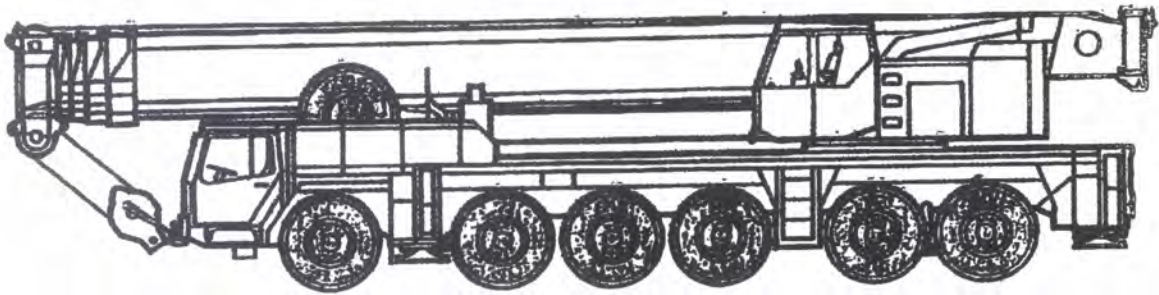




RIVERINA CRANES



CRANE CHARTS LTM 1200

200 Tonne

Telescopic boom LTM 1200



Crane supported

Working range 360°, * = over rear

Supporting base area 9,9 m × 8,6 m

2nd winch or substitute ballast and

59 t counterweight

75 %
DIN
BS

TAB 82092 Bl. 1
360°
b
59 t

Working radius [m]	T-14,1 ^{*)}	T-14,1	T-19,2 ^{*)}	T-19,2	T-23,6	T-23,6	T-28,7
3,0	200 **)	160	151	151			
3,5	175 **)	143	141	140			
4	157	131	133	129	113		
5	130	112	118	110	102		87
6	108	97	107	95	92		79
7	92	85	92	84	83		73
8	80	76	79	74	73		67
9	70	68	70	66	66		62
10	63	61	62	60	59		57
12			50	49,5	49		49
14			41,5	41,5	41		42
16			35	35	34,5		35
18					29,0		29,9
20					24,3		25,2
22							21,5
24							18,6
SLI-CODE	0021	0001	0021	0001	0001	0001	0001
max. Wind [m/s]	14,3	14,3	14,3	14,3	12,8	12,8	12,8
max. slewing speed range	2	2	2	2	2	2	2
Tele I	0	0	50	50	94	0	94
Tele II	0	0	0	0	0	0	50
Tele III	0	0	0	0	0	94	0
Tele IV	0	0	0	0	0	0	0

T = Telescopic boom length in metres.

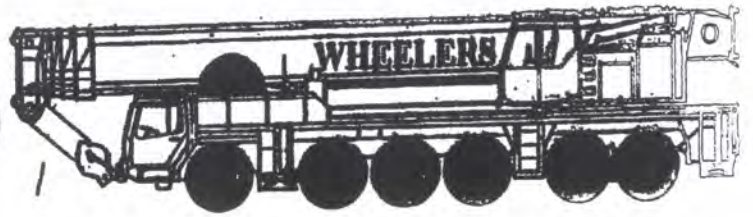
Lifting capacities above 145 t with additional equipment only.

Lifting capacities in metric tons

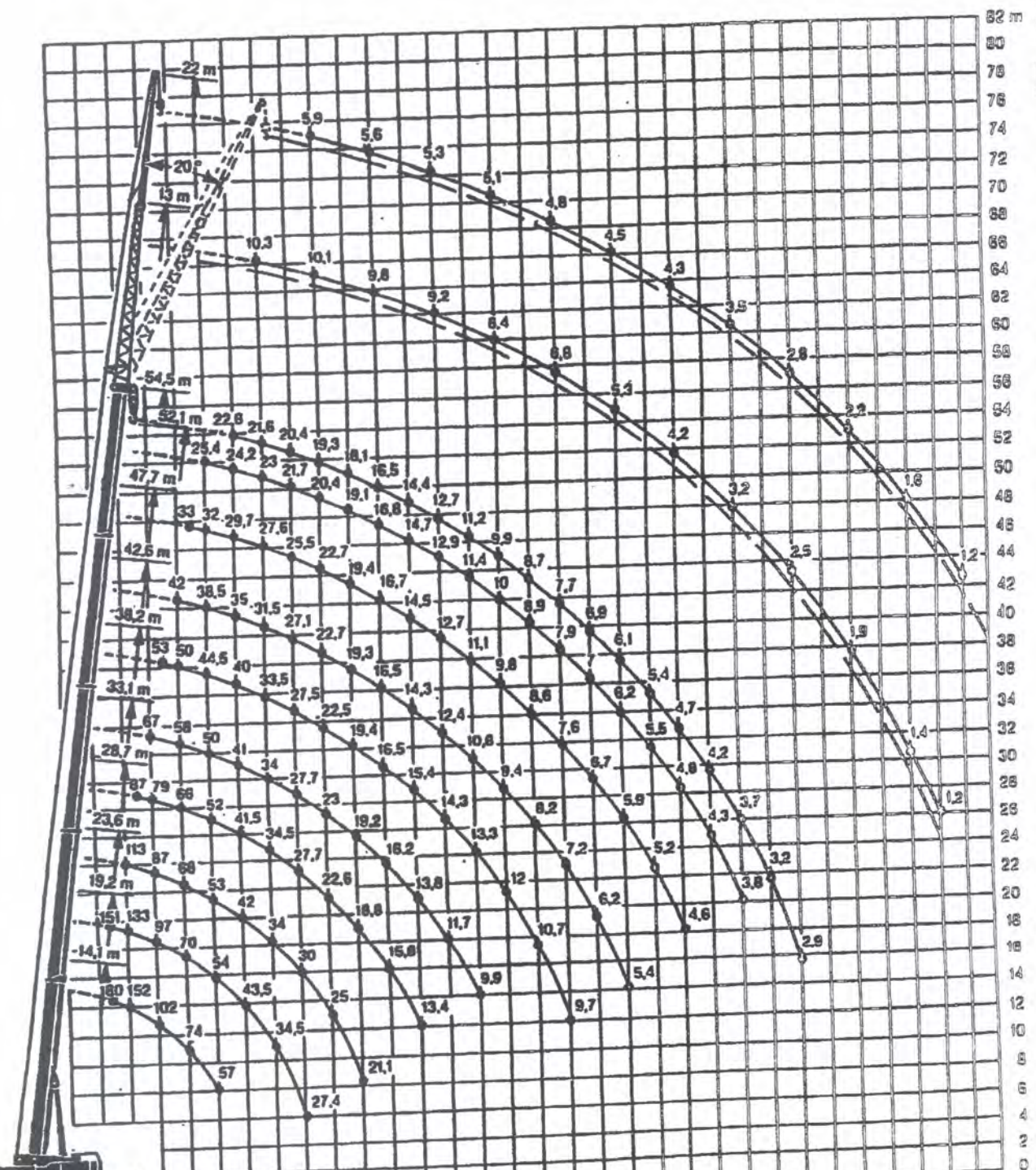
*) = working range over rear

***) = with reduced supporting base area

LTM 1200

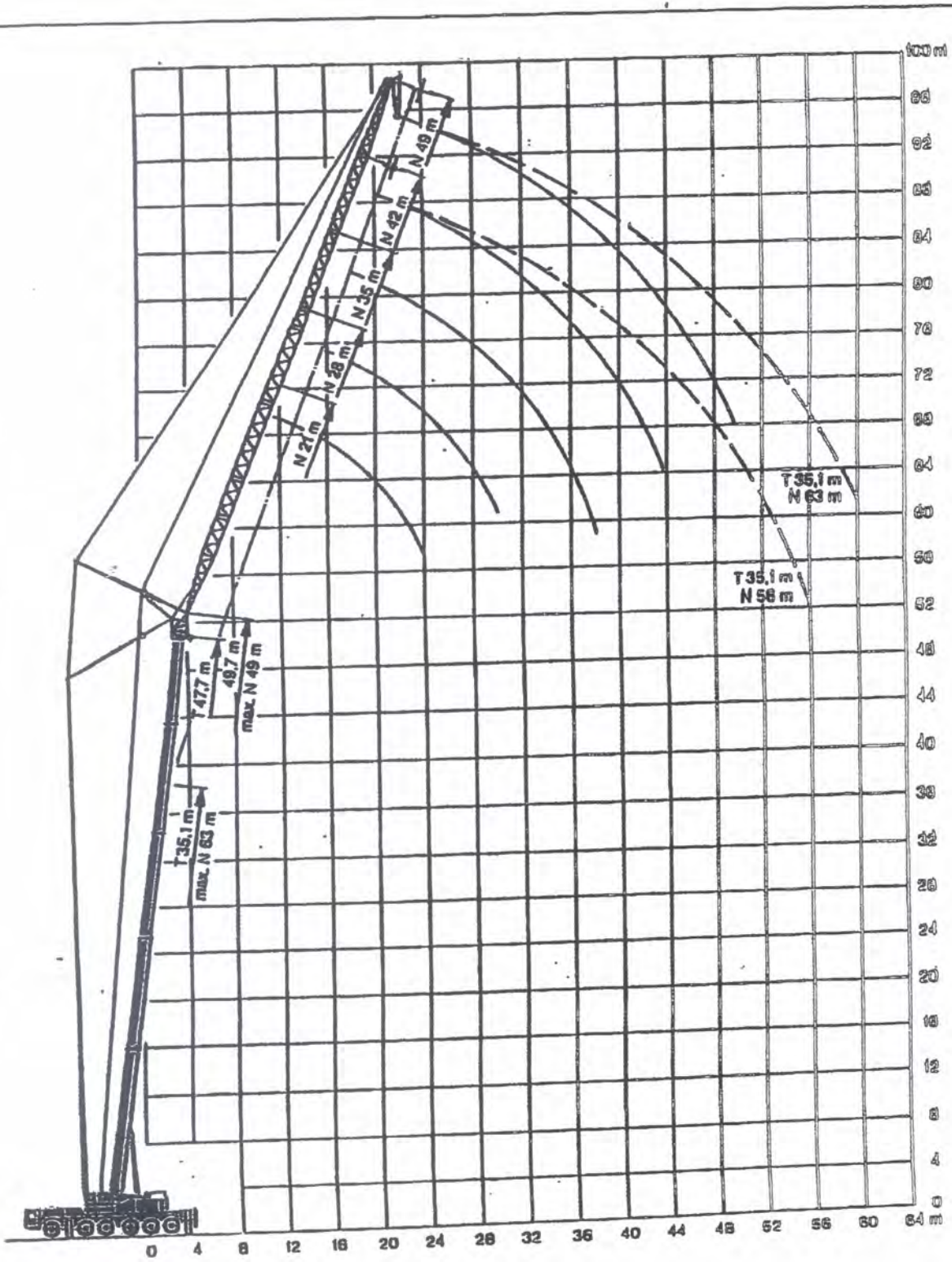


Lifting heights.



LTM 1200

Lifting heights at the luffing lattice jib.



200 Tonne 'plus'

Guyed telescopic boom LTM 1200

75%
DIN
BS

Crane supported

Working range 360°

Supporting base area 9,9 m × 8,6 m

2nd winch or substitute ballast and

79 t counterweight

TA

TAB 82144 Bl. 2
360°
b
79 t

Working radius [m]	T-42,6	T-47,7	T-52,1	T-54,5
8	37			
9	36,5	25,9		
10	36,5	25,8	17,8	
12	35,5	25,7	17,8	15,5
14	34	25,4	17,7	15,4
16	32	24,9	17,6	15,3
18	29,3	24,3	17,5	15,2
20	26,6	23,3	17,4	15,1
22	24,1	22,1	17,1	14,9
24	22,0	20,6	16,8	14,8
26	20,0	19,0	16,3	14,7
28	18,3	17,6	15,8	14,5
30	16,8	16,4	15,0	14,2
32	15,2	15,2	14,2	13,7
34	13,6	14,1	13,5	13,0
36	12,3	13,0	12,8	12,2
38	11,1	11,8	11,8	11,5
40		10,7	11,1	10,7
42		9,7	10,3	10,0
44			9,4	9,3
46			8,5	8,5
48				7,7
50				7,0
SLI - CODE	0041	0041	0041	0041
max. wind [m/s]	11,1	11,1	11,1	11,1
max. slewing speed range	1	1	1	1
Tele I	94	94	94	100
Tele II	94	94	94	100
Tele III	94	94	94	100

LTM 1200

Lifting capacities at the luffing lattice jib.



Luffing angle	23.6 m								33.1 m								Luffing angle
	17.5 m	21 m	25 m	35 m	42 m	49 m	56 m	63 m	21 m	25 m	35 m	42 m	49 m	56 m	63 m		
8	43																
9	42.7	36															
10	42.5	37.5							24.5								
11	42.3	37.5							24.2								
12	42	37.5	30						24.5	18.2							
13	41.7	37.5	30.5						24.2	18.1							
14	41.3	37.5	31.7	23					24	18							
15	40.8	37.5	31.5	21.5					23.9	18.5	13.6						
16	40.3	37.5	30.8	21.3	17				23.7	18.7	13.6						
17	39.8	37.5	30.4	20.8	16.5				23.5	18.7	13.6	10.6					
18	39.3	37.5	29.7	20.3	16.3	12.5			23.4	18.7	13.6	10.7	7.9				
19	38.8	37.5	29.1	19.8	16.1	12.5	8.5		23.3	18.7	13.6	10.7	7.9				
20	38.3	37.5	28.4	19.3	15.9	11.9	8.2		23.2	18.7	13.6	10.7	7.9				
21	37.8	37.5	27.7	18.8	15.7	11.4	7.9		23.1	18.7	13.6	10.7	7.9				
22	37.3	37.5	27	18.3	15.5	11.1	7.6			18.1	13.6	10.7	7.9				
23	36.8	37.5	26.3	17.8	15.3	10.8	7.3			18.1	13.6	10.7	7.9				
24	36.3	37.5	25.6	17.3	15.1	10.5	7			17.9	13.6	10.7	7.9				
25	35.8	37.5	24.9	16.8	14.9	10.2	6.7			17.9	13.6	10.7	7.9				
26	35.3	37.5	24.2	16.3	14.7	9.9	6.4			17.7	13.6	10.7	7.9				
27	34.8	37.5	23.5	15.8	14.4	9.6	6.1			17.7	13.6	10.7	7.9				
28	34.3	37.5	22.8	15.3	14.2	9.3	5.8			17.5	13.6	10.7	7.9				
29	33.8	37.5	22.1	14.8	14	9	5.5			17.5	13.6	10.7	7.9				
30	33.3	37.5	21.4	14.3	13.8	8.7	5.2			17.3	13.6	10.7	7.9				
31	32.8	37.5	20.7	13.8	13.6	8.4	4.9			17.3	13.6	10.7	7.9				
32	32.3	37.5	20	13.3	13.4	8.1	4.6			17.1	13.6	10.7	7.9				
33	31.8	37.5	19.3	12.8	13.2	7.8	4.3			17.1	13.6	10.7	7.9				
34	31.3	37.5	18.6	12.3	13	7.5	4			17	13.6	10.7	7.9				
35	30.8	37.5	17.9	11.8	12.7	7.2	3.7			16.8	13.6	10.7	7.9				
36	30.3	37.5	17.2	11.3	12.5	6.9	3.4			16.8	13.6	10.7	7.9				
37	29.8	37.5	16.5	10.8	12.3	6.6	3.1			16.6	13.6	10.7	7.9				
38	29.3	37.5	15.8	10.3	12.1	6.3	2.8			16.6	13.6	10.7	7.9				
39	28.8	37.5	15.1	9.8	11.9	6	2.5			16.4	13.6	10.7	7.9				
40	28.3	37.5	14.4	9.3	11.7	5.7	2.2			16.4	13.6	10.7	7.9				
41	27.8	37.5	13.7	8.8	11.5	5.4	1.9			16.2	13.6	10.7	7.9				
42	27.3	37.5	13	8.3	11.3	5.1	1.6			16.2	13.6	10.7	7.9				
43	26.8	37.5	12.3	7.8	11.1	4.8	1.3			16	13.6	10.7	7.9				
44	26.3	37.5	11.6	7.3	10.9	4.5	1			16	13.6	10.7	7.9				
45	25.8	37.5	10.9	6.8	10.7	4.2	0.7			15.8	13.6	10.7	7.9				
46	25.3	37.5	10.2	6.3	10.5	3.9	0.4			15.8	13.6	10.7	7.9				
47	24.8	37.5	9.5	5.8	10.3	3.6	0.1			15.6	13.6	10.7	7.9				
48	24.3	37.5	8.8	5.3	10.1	3.3	0			15.6	13.6	10.7	7.9				
49	23.8	37.5	8.1	4.8	9.9	3	0			15.4	13.6	10.7	7.9				
50	23.3	37.5	7.4	4.3	9.7	2.7	0			15.4	13.6	10.7	7.9				
51	22.8	37.5	6.7	3.8	9.5	2.4	0			15.2	13.6	10.7	7.9				
52	22.3	37.5	6	3.3	9.3	2.1	0			15.2	13.6	10.7	7.9				
53	21.8	37.5	5.3	2.8	9.1	1.8	0			15	13.6	10.7	7.9				
54	21.3	37.5	4.6	2.3	8.9	1.5	0			15	13.6	10.7	7.9				
55	20.8	37.5	3.9	1.8	8.7	1.2	0			14.8	13.6	10.7	7.9				
56	20.3	37.5	3.2	1.3	8.5	0.9	0			14.8	13.6	10.7	7.9				
57	19.8	37.5	2.5	0.8	8.3	0.6	0			14.6	13.6	10.7	7.9				
58	19.3	37.5	1.8	0.3	8.1	0.3	0			14.6	13.6	10.7	7.9				
59	18.8	37.5	1.1	0	7.9	0	0			14.4	13.6	10.7	7.9				
60	18.3	37.5	0.4	0	7.7	0	0			14.4	13.6	10.7	7.9				
61	17.8	37.5	0	0	7.5	0	0			14.2	13.6	10.7	7.9				
62	17.3	37.5	0	0	7.3	0	0			14.2	13.6	10.7	7.9				
63	16.8	37.5	0	0	7.1	0	0			14	13.6	10.7	7.9				
64	16.3	37.5	0	0	6.9	0	0			14	13.6	10.7	7.9				
65	15.8	37.5	0	0	6.7	0	0			13.8	13.6	10.7	7.9				
66	15.3	37.5	0	0	6.5	0	0			13.8	13.6	10.7	7.9				
67	14.8	37.5	0	0	6.3	0	0			13.6	13.6	10.7	7.9				
68	14.3	37.5	0	0	6.1	0	0			13.6	13.6	10.7	7.9				
69	13.8	37.5	0	0	5.9	0	0			13.4	13.6	10.7	7.9				
70	13.3	37.5	0	0	5.7	0	0			13.4	13.6	10.7	7.9				
71	12.8	37.5	0	0	5.5	0	0			13.2	13.6	10.7	7.9				
72	12.3	37.5	0	0	5.3	0	0			13.2	13.6	10.7	7.9				
73	11.8	37.5	0	0	5.1	0	0			13	13.6	10.7	7.9				
74	11.3	37.5	0	0	4.9	0	0			13	13.6	10.7	7.9				
75	10.8	37.5	0	0	4.7	0	0			12.8	13.6	10.7	7.9				
76	10.3	37.5	0	0	4.5	0	0			12.8	13.6	10.7	7.9				
77	9.8	37.5	0	0	4.3	0	0			12.6	13.6	10.7	7.9				
78	9.3	37.5	0	0	4.1	0	0			12.6	13.6	10.7	7.9				
79	8.8	37.5	0	0	3.9	0	0			12.4	13.6	10.7	7.9				
80	8.3	37.5	0	0	3.7	0	0			12.4	13.6	10.7	7.9				
81	7.8	37.5	0	0	3.5	0	0			12.2	13.6	10.7	7.9				
82	7.3	37.5	0	0	3.3	0	0			12.2	13.6	10.7	7.9				
83	6.8	37.5	0	0	3.1	0	0			12	13.6	10.7	7.9				
84	6.3	37.5	0	0	2.9	0	0			12	13.6	10.7	7.9				
85	5.8	37.5	0	0	2.7	0	0			11.8	13.6	10.7	7.9				
86	5.3	37.5	0	0	2.5	0	0			11.8	13.6	10.7	7.9				
87	4.8	37.5	0	0	2.3	0	0			11.6	13.6	10.7	7.9				
88	4.3	37.5	0	0	2.1	0	0			11.6	13.6	10.7	7.9				
89	3.8	37.5	0	0	1.9	0	0			11.4	13.6	10.7	7.9				
90	3.3	37.5	0	0	1.7	0	0			11.4	13.6	10.7	7.9				
91	2.8	37.5	0	0	1.5	0	0			11.2	13.6	10.7	7.9				
92	2.3	37.5	0	0	1.3	0	0			11.2	13.6	10.7	7.9				
93	1.8	37.5	0	0	1.1	0	0			11	13.6	10.7	7.9				
94	1.3	37.5	0	0	0.9	0	0			11	13.6	10.7	7.9				
95	0.8	37.5	0	0	0.7	0	0			10.8	13.6	10.7	7.9				
96	0.3	37.5	0	0	0.5	0	0			10.8	13.6	10.7	7.9				
97	0	37.5	0	0	0.3	0	0			10.6	13.6	10.7	7.9				
98	0	37.5	0	0	0.1	0	0			10.6	13.6	10.7	7.9				
99	0	37.5	0	0	0	0	0			10.4	13.6	10.7	7.9				
100	0	37.5	0	0	0	0	0			10.4	13.6	10.7	7.9				
I					94												
II					0												
III					0												
IV					0												

Luffing angle	36.2 m						42.6 m						47.7 m					Luffing angle
	21 m	26 m	36 m	42 m	49 m	66 m	21 m	26 m	36 m	42 m	49 m	66 m	21 m	26 m	36 m	42 m	46 m	
12	18.5						14											
13	18.4						14											
14	18.3						13.9											
15	18.2	14.3																

200 Tonne 'plus'

75%
DIN
BS

Guyed telescopic boom LTM 1200

Crane supported
Working range 360°
Supporting base area 9,9 m × 8,6 m
2nd winch or substitute ballast and
79 t counterweight

TA

TAB 82144 Bl. 1
360°
b
79 t

Working radius [m]	T-23,6	T-28,7	T-33,1	T-38,2	T-38,2
4	113				
5	109	85			
6	99	82	66		
7	87	78	64	46,5	34,5
8	77	72	62	46	34
9	69	67	59	45,5	34
10	62	62	55	45	33,5
12	51	52	49	43,5	32,5
14	43	44	43,5	40	31
16	37	37,5	37,5	36	29,4
18	32	32,5	32,5	32	27,0
20	27,7	28,5	28,6	29,0	24,7
22		25,1	25,2	26,0	22,8
24		22,2	22,3	23,1	21,2
26			19,8	20,6	19,8
28			17,6	18,4	18,6
30				16,4	17,6
32				14,7	16,8
34				13,2	16,2
SLI-CODE	0041	0041	0041	0041	0041
max. wind [m/s]	12,8	12,8	12,8	11,1	11,1
max. slewing speed range	2	2	2	1	1
Tele I	94	94	94	94	0
Tele II	0	50	94	94	50
Tele III	0	0	0	50	94
Tele IV	0	0	0	0	94

T- = Telescopic boom length in metres.
Lifting capacities in metric tons

200 Tonne

Telescopic boom LTM 1200

Crane supported

Working range 360°

Supporting base area 9,9 m × 8,6 m

2nd winch or substitute ballast and

59 t counterweight



TAB 82092 Bl. 2

360°

b

59 t

75 %
DIN
BS

Working radius [m]	T-33,1	T-38,2	T-38,2	T-42,6	T-47,7	T-52,1	T-54,5
6	67						
7	63	53					
8	58	50		42			
9	54	47,5		40,5	33		
10	50	44,5		38,5	32	25,4	
12	44,5	40		35	29,7	24,2	22,6
14	39	35,5		31,5	27,6	23,0	21,6
16	34,5	31,5		28,5	25,5	21,7	20,4
18	30,0	28,2		25,8	23,3	20,4	19,3
20	25,5	25,4		23,3	21,4	19,1	18,1
22	21,8	22,6		21,1	19,6	17,9	17,0
24	18,8	19,5		19,3	18,0	16,7	15,8
26	16,4	17,1		17,6	16,6	15,5	14,7
28	14,3	15,0		15,5	15,3	14,4	13,7
30		13,2		13,7	14,1	13,4	12,7
32		11,7		12,2	12,9	12,5	11,8
34		10,3		10,8	11,6	11,6	11,0
36				9,6	10,4	10,8	10,2
38				8,5	9,3	9,8	9,6
40					8,3	8,9	8,9
42					7,4	8,0	8,0
44						7,2	7,2
46						6,5	6,5
48							5,9
50							5,3
BLI-CODE	0001	0001	0001	0001	0001	0001	0001
max. Wind [m/s]	12,8	11,1	11,1	11,1	11,1	11,1	11,1
max. slewing speed range	2	1	1	1	1	1	1
Tele I	94	94	0	94	94	94	100
Tele II	94	94	50	94	94	94	100
Tele III	0	50	94	94	94	94	100
Tele IV	0	0	94	0	50	94	100

T = Telescopic boom length in metres.
Lifting capacities in metric tons

LTM 1200



Dimensions.

